



Permanent Supportive Housing Units:



**Warwick**  
2 units of permanent supportive housing for families



**Warwick**  
2 units of permanent supportive housing for families



**Warwick**  
1 unit of permanent supportive housing for a family



**Warwick**  
4 units of permanent supportive housing for single adult homeless and disabled women



**Warwick**  
1 unit of permanent supportive housing for a family (2<sup>nd</sup> unit provides transitional housing for 3 homeless women)



**Warwick**  
2 units of permanent supportive housing for families



**Warwick**  
11 units of permanent supportive housing for single adult homeless and disabled men/women



**Warwick**  
1 unit of permanent supportive housing for a family



**Warwick**  
2 units of permanent supportive housing for homeless and disabled individuals



**Warwick**  
3 units of permanent supportive housing for homeless households with a disabled adult



**Warwick**  
1 unit of rental housing for a family

**Permanent Supportive Housing Units In Development:**



**Warwick**  
will provide 5 units of permanent supportive housing for single adult homeless and disabled men/women



**Warwick**  
will provide 2 units of permanent supportive housing for families



**Warwick**  
will provide 1 unit of permanent supportive housing for a family

**Temporary Housing:**



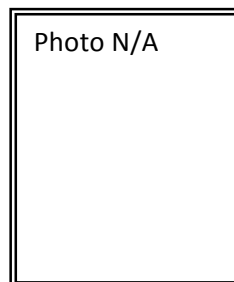
**Harrington Hall, Pastore Complex, Cranston**  
provides emergency overnight shelter for 88 homeless men



**Women's "First Step", Warwick**  
provides transitional housing for 13 homeless women



**Warwick**  
1 unit provides transitional housing for 3 homeless women (2<sup>nd</sup> unit provides permanent supportive housing for 1 family)



**Men's "First Step", Providence**  
provides transitional housing for 10 homeless men

**First Time Homeownerships:**



**Warwick**  
affordable homeownership, 2  
bedrooms, 1 bath



**Warwick**  
affordable homeownership, 2  
bedrooms, 1 bath



**Cranston**  
affordable homeownership, 4  
bedrooms, 1.5 baths



**Warwick**  
affordable homeownership, 3  
bedrooms, 2 baths



**Warwick**  
affordable homeownership, 3  
bedrooms, 2 baths

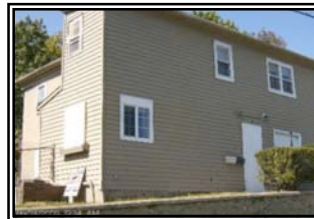


**Warwick**  
affordable homeownership, 3  
bedrooms, 2 baths

**Collaborations in Development:**



**West Warwick**  
will provide 2 units of low  
income housing owned and  
managed by the Kent Center



**West Warwick**  
will provide 2 units of low  
income housing owned and  
managed by the Kent Center



**Wakefield**  
will provide 6 units of permanent  
supportive housing for low income  
households with a disabled adult  
for Opportunities Unlimited clients

**“Main Street” Development:**



**3188 Post Road, Warwick**  
administrative offices of House  
of Hope CDC



**3194 Post Road, Warwick**  
social services offices of House  
of Hope CDC



**3190 Post Road, Warwick**  
will become retail store and  
production facility for  
House of Hope Boutique